



Welcome

To

RRP Footwear & Leather Goods Pvt. Ltd.

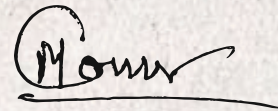


LETTER OF RECOGNITION

I would like to recognize RRP Footwear & Leather Goods Pvt. Ltd., a growing and reputable name in the footwear and leather goods industry of Bangladesh, for its strong commitment to quality manufacturing and international market standards.

As a mainly export-oriented company, RRP Footwear & Leather Goods Pvt. Ltd. plays an important role in representing Bangladeshi craftsmanship in the global footwear market. Through skilled workmanship, modern production techniques, and strict quality control, the company continues to deliver high-quality leather footwear and goods to international clients.

Their dedication to maintaining global standards, improving production efficiency, and expanding export opportunities reflects a clear vision for long-term growth and contribution to the country's export sector. The company's efforts set a positive example for the footwear and leather industry in Bangladesh.



MD. MONIRUL ALAM

Honorable Chairman,
RRP Group



Company Management Team

Meet the leadership team behind RRP Group's success and vision. Our experienced executives are committed to excellence and innovati.



Md. Monsur Alam
Managing Director



Md. Azmal Hossain
Director Marketing



Md. Monirul Alam
Honorable Chairman



Md. Rafiqul Alam
Director Operation



Mamunur Rashid
Director Production

Our Sister Concerns

RRP Group's sister concerns span agriculture, manufacturing, and retail, creating an integrated business ecosystem. Our agriculture division focuses on poultry, feed, hatcheries, and fish farming, while manufacturing produces pharmaceuticals, food, PP sacks, footwear, and leather goods for local and international markets. Our retail operations provide essential and lifestyle products, including RRP's own brands, across Bangladesh.

Agriculture & Farming

Our agricultural ventures cover poultry farming, feed production, hatcheries, fish farming, and related activities that play a vital role in strengthening Bangladesh's food security. By using modern technology and strict quality control, we ensure consistent, reliable, and safe production across the value chain.

- RRP Agro Farms
- RRP Layer & Breeder Farms
- RRP Chicks

Industrial & Manufacturing

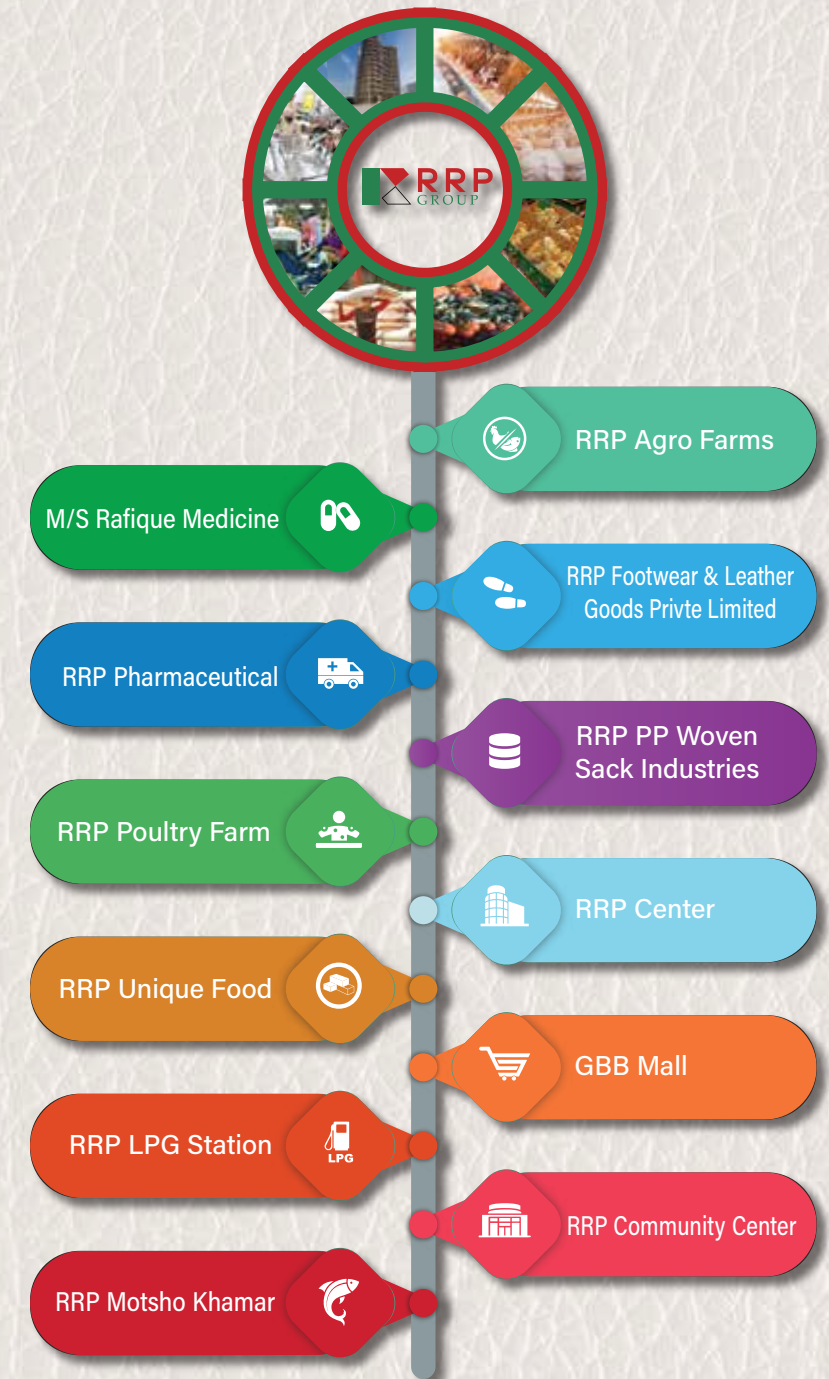
RRP Group's industrial operations cover a wide range of manufacturing activities designed to meet global standards. These units serve both domestic and international markets with a strong focus on quality, operational efficiency, and continuous innovation.

- RRP Pharmaceuticals - Animal Health Division
- RRP PP Oven and Sack
- RRP Footwear and Leather Goods
- Rafique Medicine
- RRP Unique Food

Commercial & Retail

Through our commercial and retail businesses, including modern shopping centers and branded retail outlets, we deliver everyday essentials, lifestyle products, and our own manufactured goods to customers across Bangladesh. Our retail operations are designed to offer convenience, trust, and a modern shopping experience.

- RRP Transport
- GBB Mall
- RRP Cente



Company Strength

RRP Footwear & Leather Goods Pvt. Ltd. is a financially strong export-oriented company under the RRP Group, with an annual turnover of around USD 465 million. The company operates modern bonded warehouse facilities and is supported by an experienced management team and a skilled workforce. With technical support from international experts and global sourcing teams in Korea and China, RRP ensures high-quality products and efficient operations.

Global Sourcing & Development Team

The company maintains sourcing and development teams in Korea and China, alongside a strong local sourcing team to ensure quality and supply efficiency



Bonded Warehouse Facilities

The company operates bonded warehouse facilities that enable efficient storage and smooth handling of export-oriented goods.



Domestic & Foreign Technical Support

Technical specialists from countries such as China, Europe, and Korea provide advanced technical guidance and support.



Skilled and Young Operations Team

A dedicated team of skilled and energetic young professionals manages daily operations with efficiency and innovation.



Experienced Management Team

The management team brings extensive industry experience and strong expertise in product development and business strategy.



Financially Solvent Organization

Part of RRP Group with an annual turnover of around \$465 million, demonstrating strong financial stability and growth.

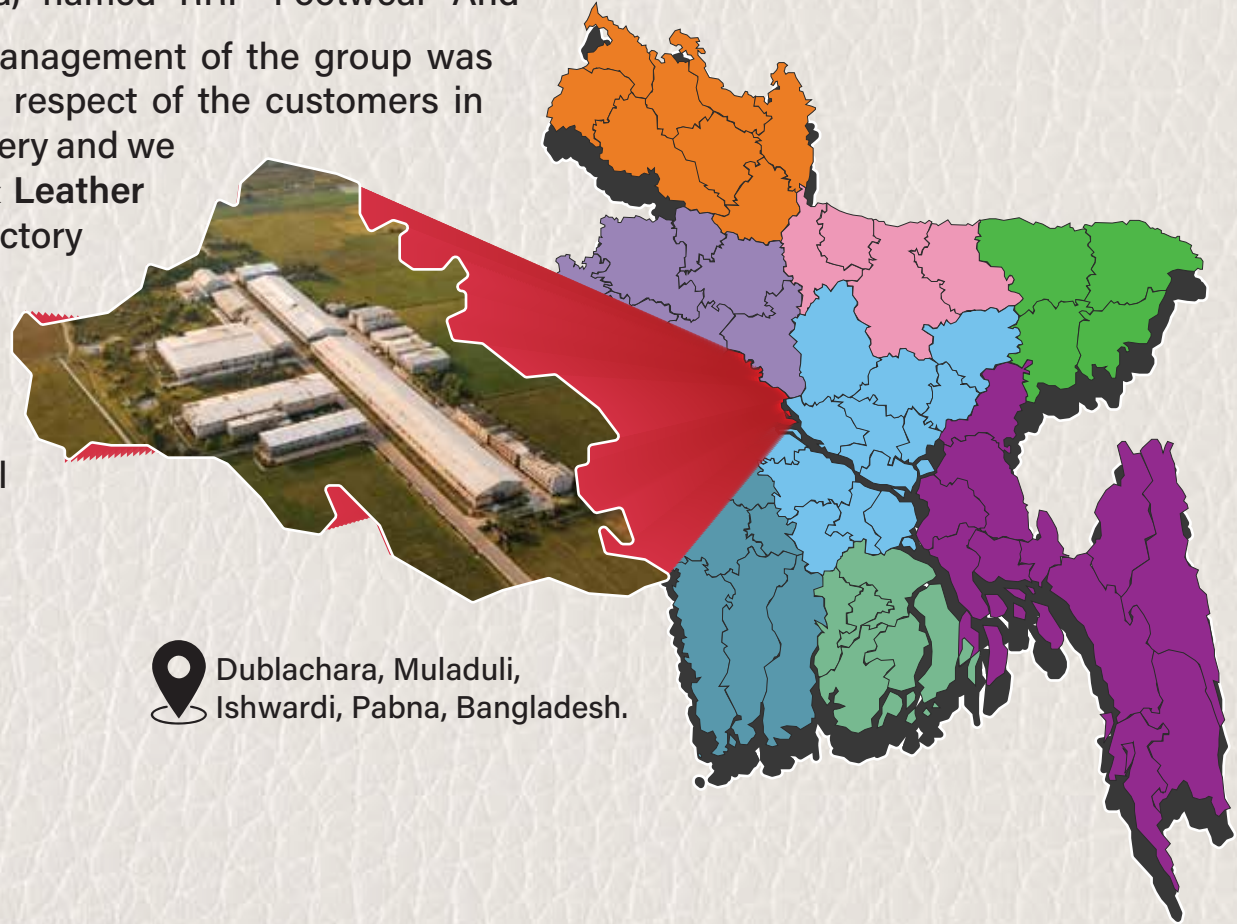



Company Structure

RRP Group is introducing a well-established and 100% export oriented footwear & leather goods manufacturing industry in Bangladesh.

The Factory located at Ishwardi, Pabna, named **RRP Footwear And Leather Goods Pvt. Ltd.** The proficient management of the group was able to gain the confidence and won the respect of the customers in terms of quality assurance and timely delivery and we can proudly declare that **RRP Footwear & Leather Goods Pvt. Ltd.** is the most diversified factory with wide range of product and facilities.

Moreover, Korean and Chinese team and technology work together to produce better quality products for the international fashion market.





 Dublachara, Muladuli,
Ishwardi, Pabna, Bangladesh.




Our Export Destinations

We proudly export our premium footwear and leather goods to global markets, representing the quality and craftsmanship of Bangladesh worldwide. Around 85% of our exports go to the EU, 10% to the USA, and 5% to India. With 08 international customers, annual production of nearly 10 lakh pairs, and a turnover of about \$7.2 million, we maintain strong and growing global partnerships.

 Europe 85%


 USA 10%

 India 5%



 08 Customers

 10 Lac PRS

 \$7.2M Turnover





SEDEX

Improved working conditions in global supply chain



Bis Certification

Bis Certification Services Compliance Consultants a Comprehensive Guide



ISO 14001

Occupational Health & Safety Management System



Amfori BSCI

Trade with Purpose by Improving social performance



ISO 14001

Occupational Health & Safety Management System



The Global Recycled Standard

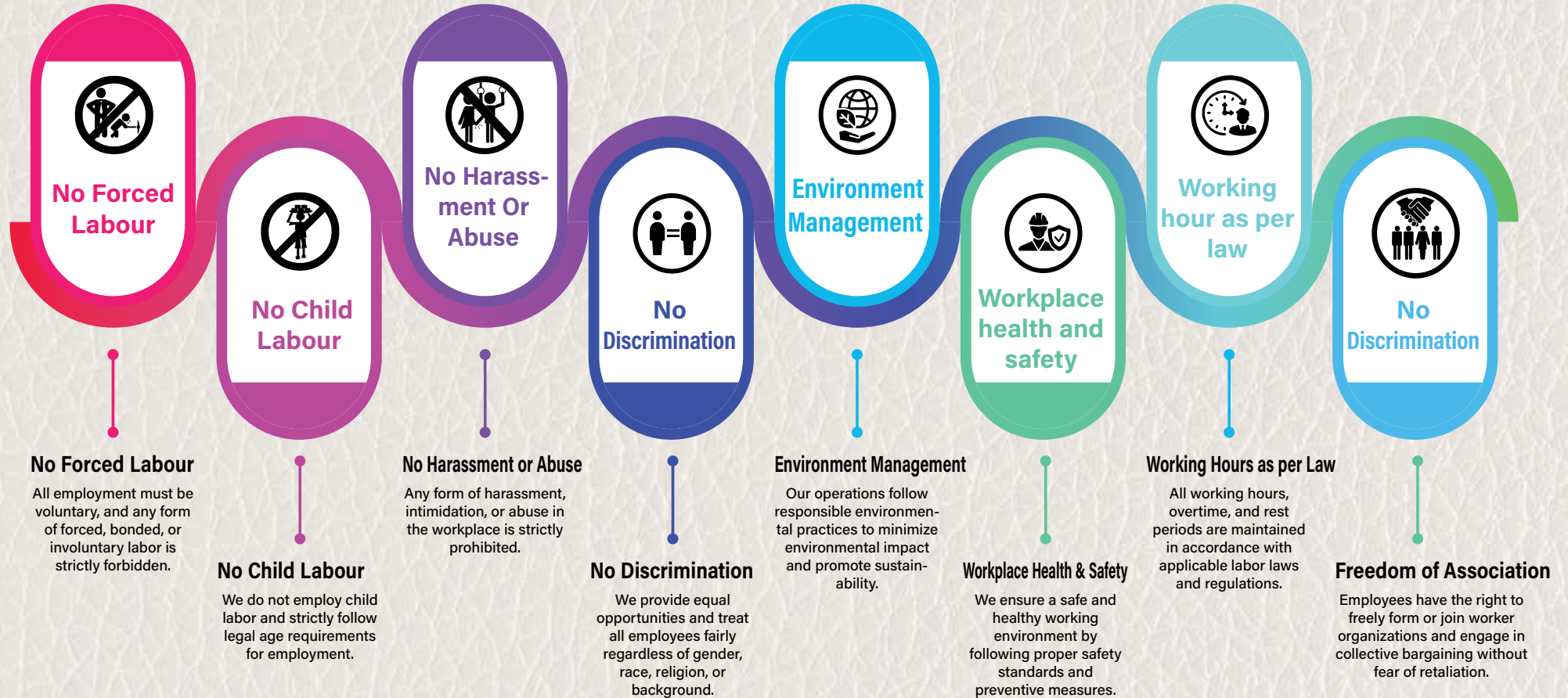
The Global Recycled Standard (GRS)



Higg Index

Has Completed the Higg Fem Self-Assessment

Business Code Of Conduct



State-of-the-Art Production Facilities

Located in Arkandi, Muladuli, Ishwardi, Pabna, Bangladesh, our main production facility spans across a modern industrial complex dedicated to crafting premium leather goods with precision and care.

Facility Highlights

- Quality Control Lab
- Eco-friendly Processes
- Skilled Workforce
- Modern Equipment



RRP Footwear & Leather Goods Pvt. Ltd.



Motto

To develop long lasting and healthy relationship with our customers & suppliers



Spirit

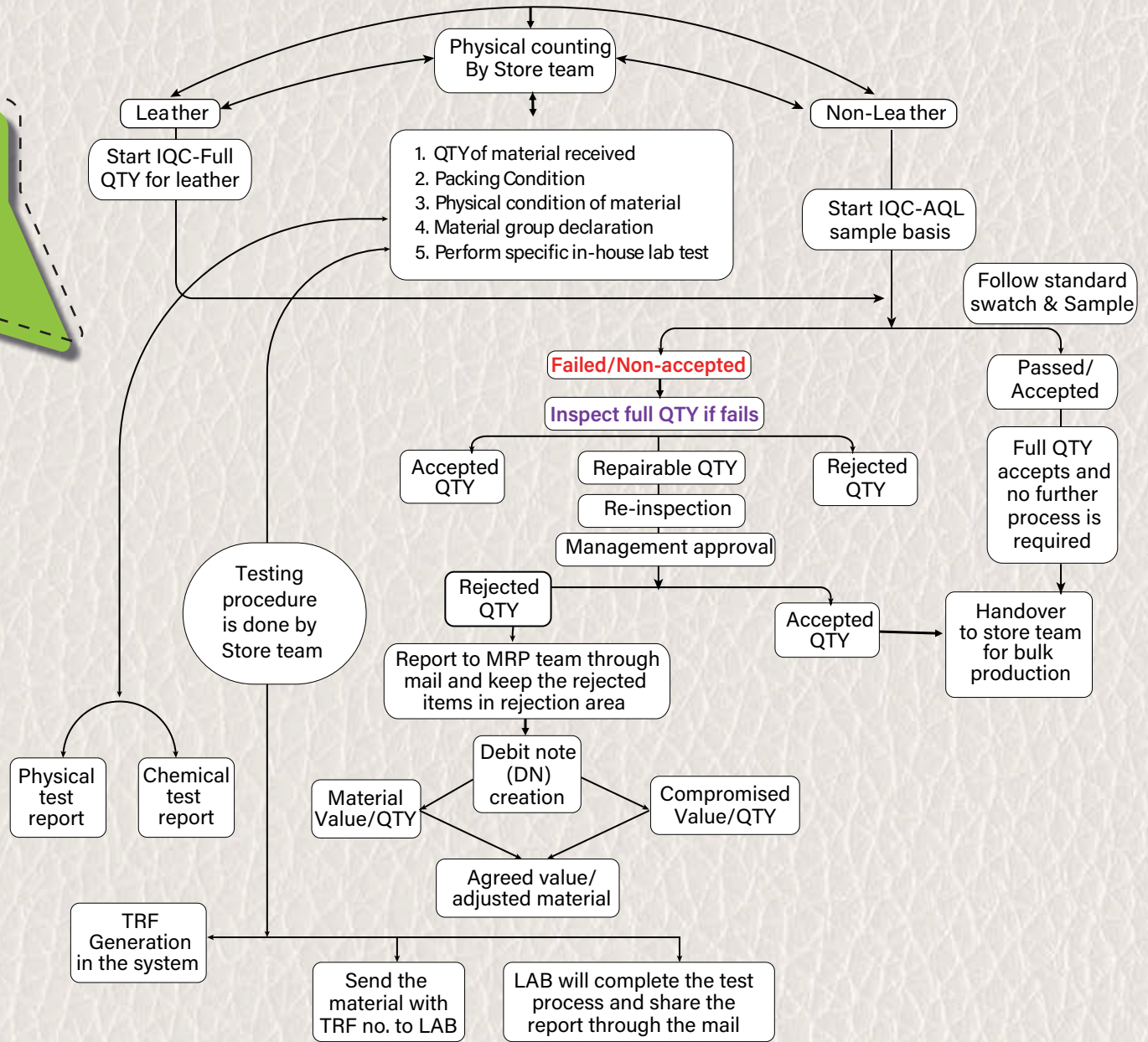
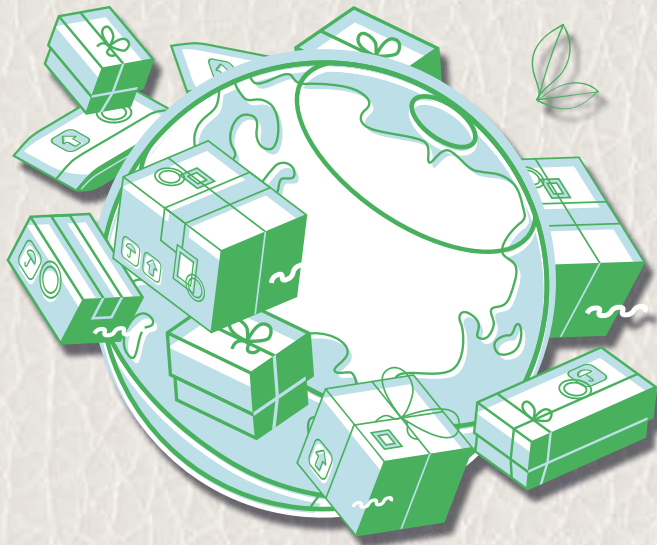
Full dedication towards achieving our commitments including all stake holders



Material Received

RRP Footwear and Leather Goods Pvt. Ltd. Warehouse

Excellence is not achieved by chance; it comes from dedication, careful planning, and the commitment to deliver the best in every step.



Quality Standards

Our Commitment to Excellence

- **Premium Material Selection**
Only the finest full-grain leather sourced from ethical suppliers.
- **Master Craftsmanship**
Skilled artisans with generations of leather-working expertise.
- **Rigorous Testing**
Every product undergoes durability colorfastness, and stress testing.
- **International Certifications**
Compliant with global quality and ethical manufacturing standards.



Prominent International Brands We Export For

NORMA

Bata



DEICHMANN



ALPINE PRO



asian



Leather Goods Product



Lady Shoulder & Cross Bag



Lady Shoulder & Cross Bag



Lady Shoulder & Cross Bag



Lady Shoulder & Cross Bag



Lady Shoulder & Cross Bag



Lady Shoulder & Cross Bag



Lady Shoulder & Cross Bag



Lady Shoulder & Cross Bag

Leather Goods Product



Lady 3-Piece Quilted Bag Set



Lady Handbags



Man's Shoulder Bag



Lady 3-Piece Quilted Bag Set



Leather Sling Bag



Men's Office Bag

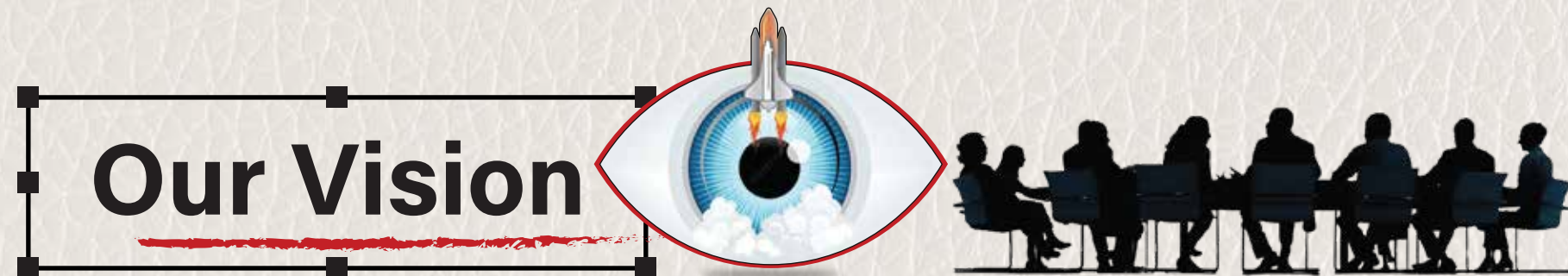


Men's Office Bag

Our Mission & Vision



To produce premium footwear and leather products that meet global standards through skilled craftsmanship, modern technology, and responsible manufacturing. We aim to build long-term partnerships with international clients while contributing to sustainable growth, employee development, and the advancement of Bangladesh's leather industry.



To become a globally recognized manufacturer and exporter of high-quality footwear and leather goods from Bangladesh, known for superior craftsmanship, innovation, and reliability in international markets.

Factory Status

- **Name of the Project** : RRP Footwear and Leather Goods Pvt. Ltd.
- **Location of the Project** : Dublachara, Muladuli, Ishwardi, Pabna.
- **Status of the Project** : A Private Limited Company.
- **Production Capacity** : Sports Shoe Cemented 8000 Pairs per day from 4 lines.
Leather(SLG)-1200Pcs, BLG-800 Pcs from 4 Line.
- **Target Market of the Products** : 100% Export in Japan, Europe, USA, Canada, India, Middle-East etc.
- **Area as per Master Plan** : 2,90,000 sft (Approx.).
- **No. of Working Days in a Year** : 280 days.
- **Employment Generation** : 2000 Persons.
- **IMEVA Machine Per Mold Production** : 8 To 9 Pair/hr/Mold
- **IMEVA project shed measurements** : 150' /50'
- **Cork sandal project shed measurements** : 75' (plus minus-5) / 50'
- **Sources of Utilities** : PDB/REB + Diesel Back up.
- **Power Back up** : Self Back UP Power Generator.



Admin building (4 Storied)	12,240 sft	Generator Shed	1,140 sft	Leather Goods Unit -01	7,828 sft.
Finish Goods Warehouse(4Storied)	21,060 sft	Container (2 Storied)	1,280 sft	Leather Goods Production Office	525 sft.
Bonded warehouse Building (3 Storied)	21,060 sft	Fire Pump Room & U.G.Water Reservoir	2,940 sft	Leather Goods Extension Shed	2,352 sft
Lamination Shed	5,250 sft	Fire Control Room & Gate	629 sft	Leathers Goods Toilet Block	320 sft
Printing Shed	6,860 sft	Waiting Space & Main Gate -1	629 sft	Cork Sandal Project Shed	7,828 sft.
ETP	414 sft	Sports Shoe Shed-01 (with mezzanine)	48,177 sft	IMEVA Project Shed	4,290 sft
Welfare building (3 Storied)	11,280 sft	Sports Shoe Shed-02	31,592sft	Wastage Shed	5,096 sft
Utility/ Substation Building (3 Storied)	8,460 sft	Chemical Store Building (1 Storied)	3,600 sft	Warehouse Building (3 Storied)	63,000 sft
				Security Post (5 Nos)	280 sft

Total 2,90,000 sft.



Admin Building

The Admin Building serves as the central hub for management, planning, and administrative operations. It ensures smooth coordination between departments, efficient communication, and effective decision-making to support the company's production and export activities. The facility reflects our commitment to organized management and professional working standards.



Sports Shoe Unit

The Sports Shoe Units (1 & 2) are dedicated production facilities focused on manufacturing high-quality sports footwear for international markets. Equipped with modern machinery and skilled workers, these units ensure efficient production, precision, and consistent quality to meet global export standards. These units play a key role in maintaining the company's strong reputation in the footwear industry at RRP Footwear & Leather Goods Pvt. Ltd.



Sports Shoe Unit 1



Sports Shoe Unit 2

Product Development section

The Product Development Section focuses on innovation, design, and sample creation to meet international market trends and customer requirements. Our skilled team works closely with buyers to develop new styles, improve product quality, and ensure every design meets global standards before mass production at RRP Footwear & Leather Goods Pvt. Ltd.



Laboratory

The Laboratory ensures that all materials and finished products meet required quality standards. Various tests are conducted to check durability, strength, and compliance with international footwear quality requirements.



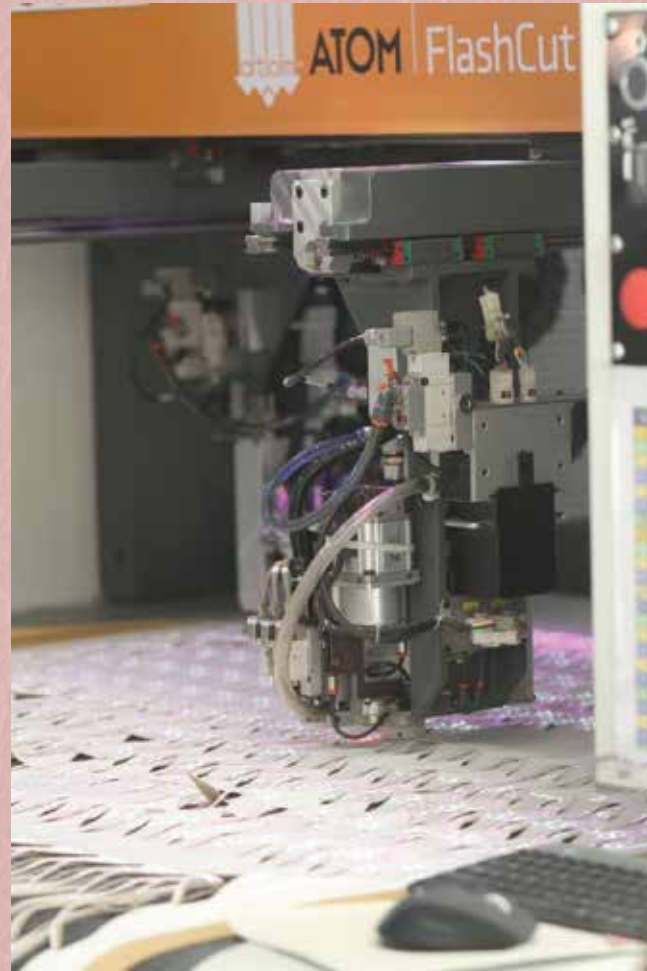
Cutting Section

The Cutting Section carefully cuts leather and other materials according to design patterns. Precision cutting ensures proper material utilization and consistency in product quality.



Automatic Machine

RRP Footwear & Leather Goods Pvt. Ltd. uses modern machinery and advanced technology to ensure high-quality production, efficiency, and consistency. Our factory is equipped with automatic and semi-automatic machines that support every stage of footwear manufacturing, from cutting and stitching to lasting and finishing.



Printing Section

The Printing Section applies logos, designs, and branding elements on shoe components using modern printing techniques to ensure clear, durable, and high-quality finishes.



| Lasting section

The Lamination Section bonds different materials together to enhance strength, flexibility, and appearance. This process improves the durability and overall performance of the footwear.



Lamination Section

The Lamination Section bonds different materials together to enhance strength, flexibility, and appearance. This process improves the durability and overall performance of the footwear.



Sewing Section

The Sewing Section assembles various shoe components through precise stitching. Skilled operators ensure strong seams and neat finishing to maintain product quality.



Dining Hall

The Dining Hall offers a clean and comfortable space where employees can take meals and rest during breaks, supporting a healthy and productive working environment.



Medical Section

The Medical Section provides basic healthcare support and first aid services for employees, ensuring workplace safety and immediate medical attention when needed.



Utility Building

The Utility Building supports factory operations by housing essential systems such as power, water supply, and other technical services required for smooth production activities.



Generator

The Generator system ensures uninterrupted power supply during electricity outages, allowing production and essential operations to continue without disruption.



Bond Warehouse

The Bond Warehouse securely stores imported raw materials under bonded facility regulations, ensuring proper inventory control and compliance with export-oriented industry requirements.



Finished Goods Warehouse

The Finished Goods Warehouse safely stores completed footwear and leather products before shipment, ensuring proper handling, quality preservation, and organized export logistics.



Thank you



RRP Group

Arkandi, Muladuli, Ishwardi, Pabna

Visit our website www.rrpgroup.com.bd

Dhaka Office

B15/1, RRP Garden, Shimultola, Savar, Dhaka



**RRP Footwear &
Leather Goods Pvt Ltd**

RRP Footwear & Leather Goods Pvt Ltd

Dublachara, Muladuli, Ishwardi, Pabna

Visit our website : www.rrpfootwear.com